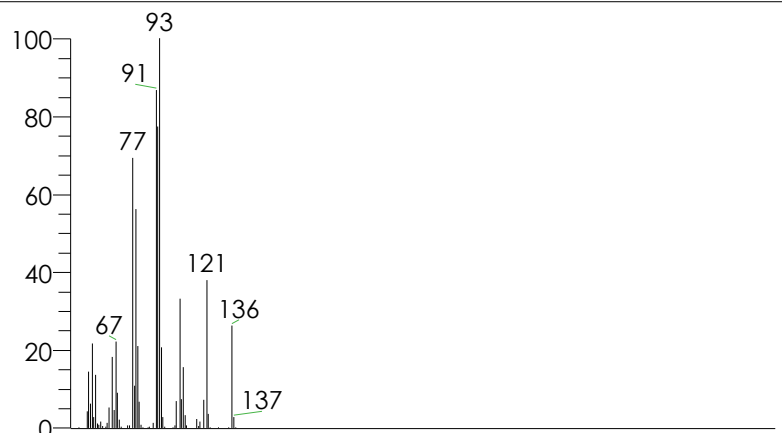
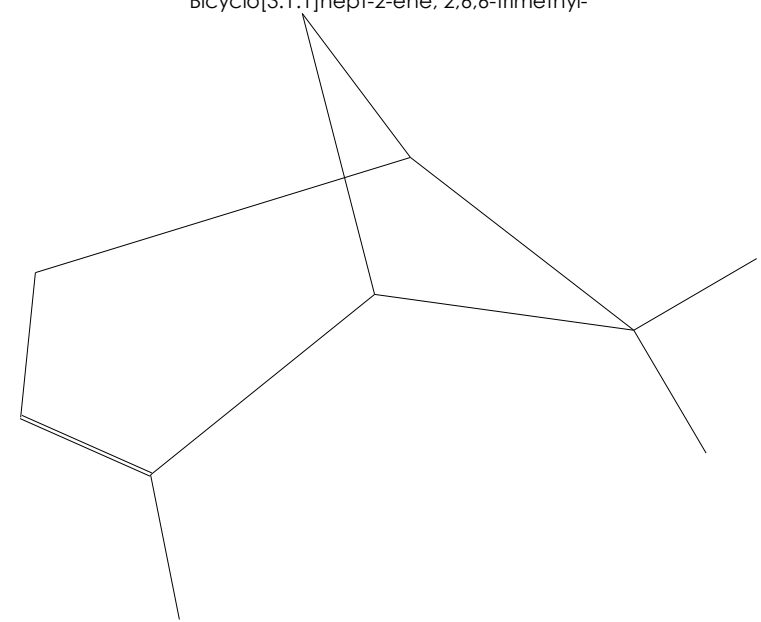
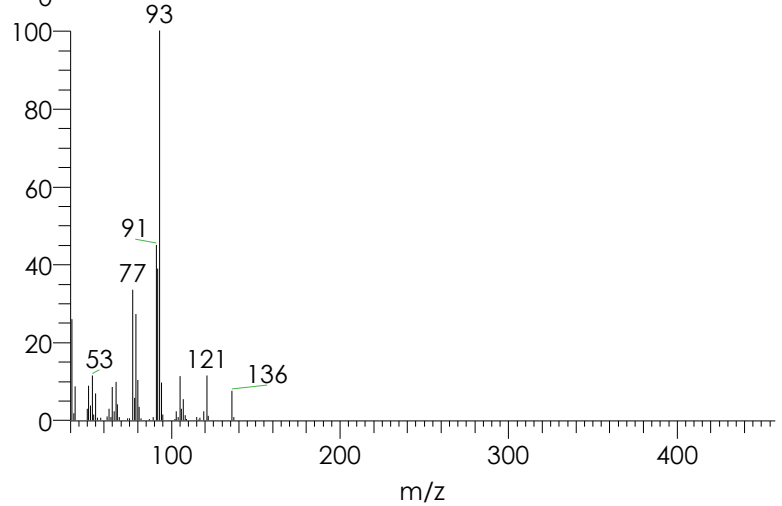


Hit	SI	RSI	Prob	Name	Library Name
1	944	945	23.19	5.85 Pinene<alpha-> \$\$	Adams
2	941	942	23.19	$\alpha$ -PINENE, (-)-	Wiley
3	936	937	17.30	1R- $\alpha$ -Pinene	MAINLIB
4	928	928	12.91	.DELTA.3 CARENE	Wiley
5	928	929	12.91	Bicyclo[3.1.1]hept-2-ene, 2,6,6-trimetl	MAINLIB
6	926	927	23.19	$\alpha$ -PINENE, (-)-	Wiley
7	925	925	23.19	$\alpha$ -Pinene	MAINLIB
8	922	925	12.91	8.10 Carene<delta-3-> \$\$	Adams
9	918	929	23.19	$\alpha$ -PINENE, (-)-	Wiley
10	916	916	23.19	$\alpha$ -PINENE, (-)-	Wiley
11	909	909	12.91	.DELTA.3-Carene	Wiley
12	908	910	12.91	.DELTA.3-Carene	Wiley
13	900	909	12.91	.DELTA.3-Carene	Wiley
14	899	905	23.19	$\alpha$ -PINENE, (-)-	Wiley
15	899	899	3.65	1S- $\alpha$ -Pinene	MAINLIB
16	897	912	23.19	$\alpha$ -PINENE, (-)-	Wiley
17	896	896	3.23	1,3,6-Octatriene, 3,7-dimethyl-, (E)- (C	Wiley
18	896	896	3.65	(-)-ALPHA-PINEN	Wiley
19	892	894	2.73	cis-Ocimene	Wiley
20	891	899	2.73	cis-Ocimene	Wiley

5.85 Pinene<alpha-> \$\$  
 Formula C10H16, MW 136, CAS# 80-56-8, Entry# 912  
 Bicyclo[3.1.1]hept-2-ene, 2,6,6-trimethyl-



NL: 9.99E2  
 izadi#243 RT: 4.32 AV: 1  
 SB: 2 9.96 , 10.09 T: {0,0} +  
 c EI det=350.00 Full ms [  
 45.00-460.00]



NL: 9.99E2  
 SI 944, RSI 945, Adams,  
 Entry# 912, CAS# 80-56-8,  
 5.85 Pinene<alpha-> \$\$

Raw data - Library entry

