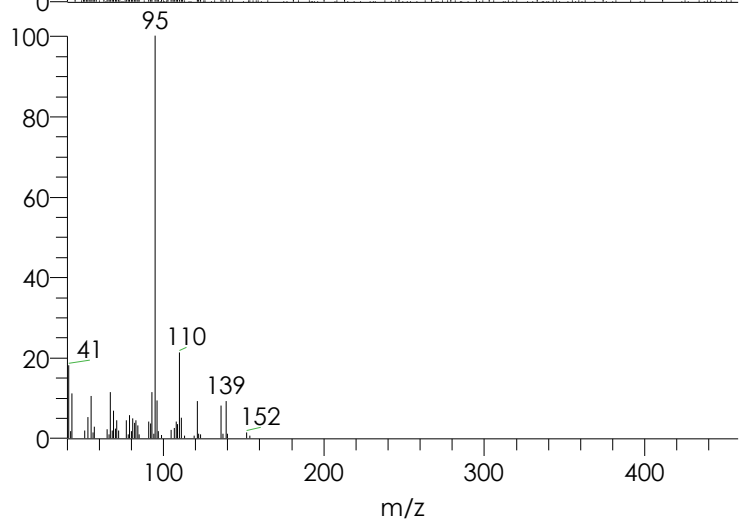
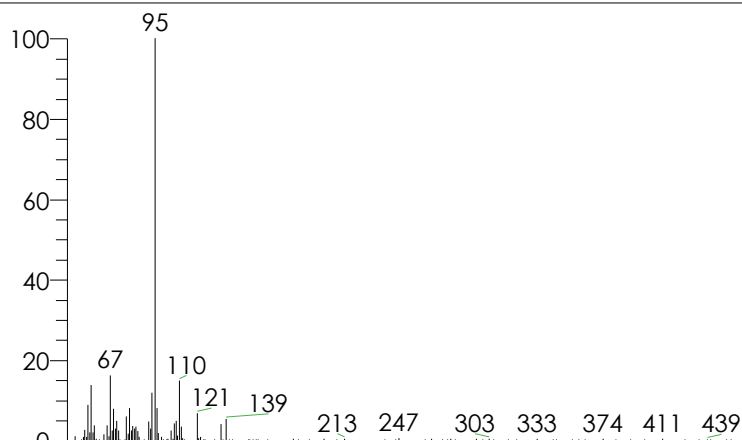
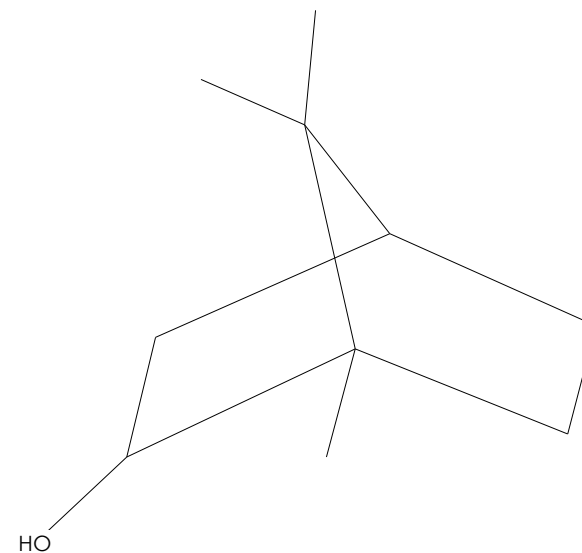


Hit	SI	RSI	Prob	Name	Library Name
1	826	912	31.64	14.29 Borneol \$\$	Adams
2	819	893	24.24	Bicyclo[2.2.1]heptan-2-ol, 1,7,7-trime	MAINLIB
3	818	883	31.64	endo-Borneol	Wiley
4	818	885	23.30	Borneol	Wiley
5	816	888	24.24	1-BORNEOL	Wiley
6	814	883	31.64	Borneol	MAINLIB
7	814	883	24.24	BORNEOL L	Wiley
8	809	882	24.24	1-BORNEOL	Wiley
9	797	879	9.91	13.87 Isoborneol \$\$	Adams
10	797	864	9.91	Bicyclo[2.2.1]heptan-2-ol, 1,7,7-trime	Wiley
11	794	862	23.30	Borneol	Wiley
12	792	870	31.64	endo-Borneol	Wiley
13	791	865	9.91	Bicyclo[2.2.1]heptan-2-ol, 1,7,7-trime	Wiley
14	788	860	23.30	Borneol	MAINLIB
15	787	884	31.64	endo-Borneol	Wiley
16	787	851	31.64	endo-Borneol	Wiley
17	785	851	24.24	1-BORNEOL	Wiley
18	784	864	9.91	Bicyclo[2.2.1]heptan-2-ol, 1,7,7-trime	Wiley
19	783	848	31.64	endo-Borneol	Wiley

14.29 Borneol \$\$  
 Formula C10H18O, MW 154, CAS# 507-70-0, Entry# 315  
 Bicyclo[2.2.1]heptan-2-ol, 1,7,7-trimethyl-



Raw data - Library entry

